



Gypsies & Travellers

Richard Bennett

Common Defn:

The term "Gypsies and Travellers" means:

"Persons of nomadic habit of life whatever their race or origin, including such persons who on grounds only of their own or their family's or dependants' educational or health needs or old age have ceased to travel temporarily or permanently"

Differences Defn:

Planning:

but excluding members of an organised group of travelling show people or circus people travelling together as such.

Housing:

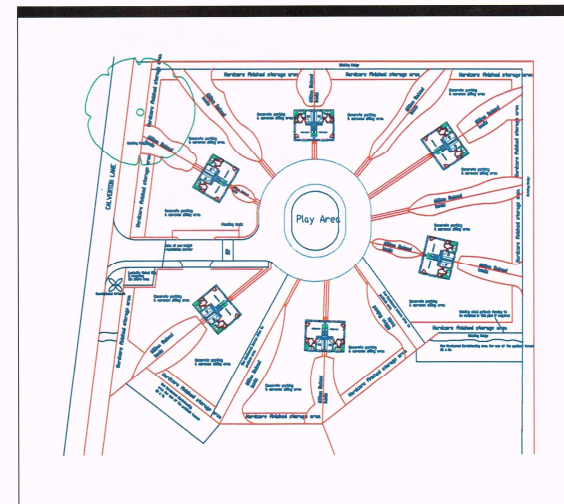
and all other persons with a cultural tradition of nomadism and/or caravan dwelling.

Definition: Site and Pitch

- A site contains a number of pitches
- Individual pitches need space for:
 - A static caravan
 - A touring caravan
 - An ablutions block
 - Vehicles
 - Pets
 - 500 sq m



Designing Gypsy and Traveller Sites
Good Practice Guide



www.communities.gov.uk
community, opportunity, prosperity



The Numbers

- 6800 – Public pitches
- 9400 – Private pitches
- 1400 – Unauthorised Encampments
- 1800 – Unauthorised Developments
- 3200 – Unofficial Pitches
- 16% - Unofficial Pitches

The Problem

- One in five Gypsy and Traveller caravans are on unauthorised sites
- Tensions with the settled community - £18m spent annually on enforcement
- Gypsies and Travellers are the most socially excluded group in the country

Public Perception

- Crime
- Rubbish
- Taxes
- Unauthorised encampments
- Unauthorised developments

The Reality - Health

- Average life expectancy of Gypsies & Travellers is 20 years less than for the settled population
- 42% of Gypsies & Travellers have long term illnesses – compared to 18% of the settled population
- 18% of Gypsy & Traveller mothers have experienced the death of a child
-compared to less than 1% of the settled community

The Reality - Education

- A – C Grades at GCSE
 - 52% of the settled population
 - 30% of Irish Traveller children
 - 13% of Gypsy children

The Solution

- 3500 pitches
- Adequate provision
- Appropriate provision

Government Policy

- 2004 Housing Act
- Planning Policy for Traveller Sites (3/12)
- PPTS Equality Impact Assessment (3/12)
- Ministerial Working Group Report (4/12)
Tackling Inequalities Experienced by G & T
- Public Sector Equality Duty (5/12)

Government's Policy Aim

- To ensure fair and effective provision of authorised sites for Travellers to facilitate the traditional and nomadic way of life of these groups whilst respecting the interests of the settled community

Public Sector Equality Duty

- Romany Gypsies and Irish Travellers are recognised as having a protected characteristic under the Equality Act 2010. The Government recognises that these groups experience poor social outcomes and discrimination. It, therefore, wants changes to policy to promote equality and reduce discrimination.

Housing Act 2004

- 225(1)

Every local housing authority must
carry out an assessment of the
accommodation needs of Gypsies and
Travellers residing in or resorting to their
district.

Housing Act 2004

- 225(2)

. . . a local housing authority are required
. . .to prepare a strategy in respect of the
meeting of such accommodation needs.

Housing Act 2004

- 225(5) (b)

'accommodation needs' includes needs with respect to the provision of sites on which a caravan can be stationed.

Housing Act 2004

- 225(3)

The local authority who are the local housing authority must take the strategy into account in exercising their functions.

'Functions' includes functions exercisable otherwise than as a local housing authority.

Planning Policy for Traveller Sites

- Use a robust evidence base to establish need
- By March 2013:
 - Identify & update annually a five years' supply of specific, deliverable sites
 - Identify broad locations for years 6 -10
 - Failure to comply is a significant material consideration
 - Grant Temporary Planning Permission in the absence of a 5 year land supply
- Have a criteria based policy to deal with other applications

Planning Policy for Traveller Sites

- Work collaboratively
- Be consistent with the NPPF
- Develop fair and effective strategies
- Identification of land for sites
- Protect the Green Belt
- Reduce unauthorised developments & encampments

Planning Policy for Traveller Sites

- Promote private traveller site provision
- Address under provision
- Maintain appropriate level of supply
- Reduce tensions
- Enable provision of suitable accommodation
- Protect local amenity / environment

Further Information

- Email me - RMBennett@obdn.co.uk
- Join the Gypsy and Traveller Knowledge Network @local.gov.uk
- Read the Report of the LGA Gypsy and Traveller Task Group